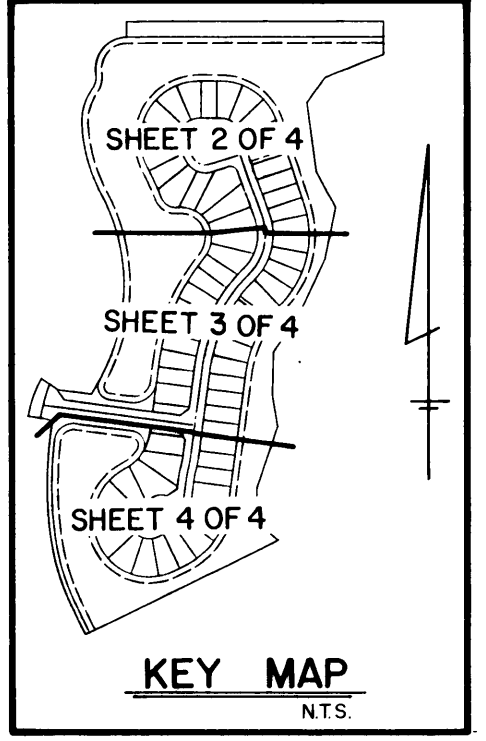


PARCEL 60-A AT THE MEADOWS

A PLAT OF
BEING PLAT NO. 58 OF MARTIN DOWNS A P.U.D. ALSO
BEING A REPLAT OF ALL OF PARCEL 60 AT THE MEADOWS
BEING PLAT NO. 50 OF MARTIN DOWNS A P.U.D. AS RECORDED
IN P.B. 11, PG. 94 PUBLIC RECORD OF MARTIN COUNTY, LYING
IN SECTION 12, TOWNSHIP 38 SOUTH, RANGE 40 EAST, MARTIN COUNTY, FLORIDA
SHEET 2 OF 4



I, MARSHA STILLER, CLERK OF THE CIRCUIT COURT OF MARTIN COUNTY, FLORIDA, HEREBY CERTIFY THAT THIS PLAT WAS FILED FOR RECORD IN PLAT BOOK 12, PAGE 56, MARTIN COUNTY, FLORIDA, PUBLIC RECORDS, THIS DAY OF _____ A.D. 19____.
MARSHA STILLER, CLERK OF CIRCUIT COURT MARTIN COUNTY, FLORIDA
BY: _____ DEPUTY CLERK
FILE NO. _____

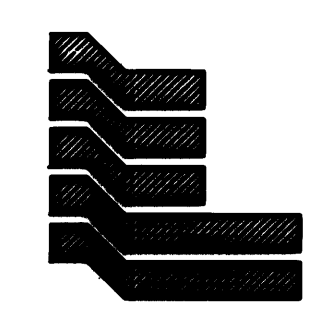
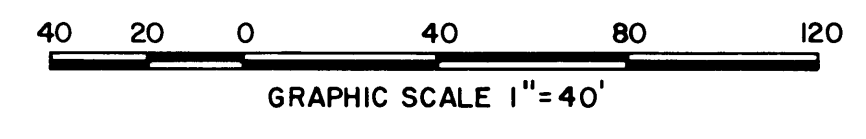
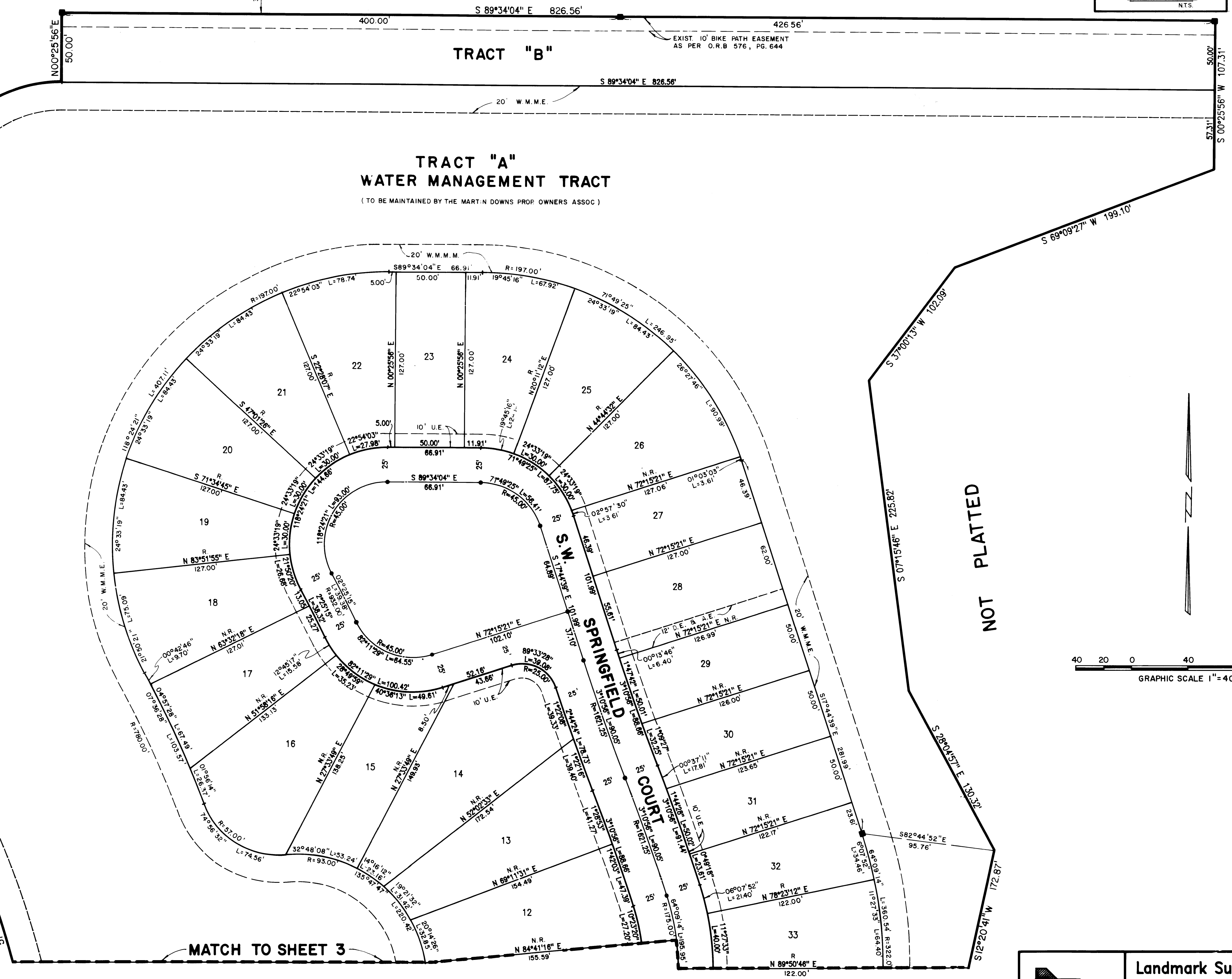
S.W. MURPHY ROAD

TRACT "B"

TRACT "A"
WATER MANAGEMENT TRACT
(TO BE MAINTAINED BY THE MARTIN DOWNS PROP OWNERS ASSOC)

PARCEL 62 AT THE MEADOWS
(PLAT BOOK 12, PAGE 17)

NOT PLATTED



Landmark Surveying & Mapping Inc.
1850 FOREST HILL BOULEVARD
PH. (305)433-5405 SUITE 100 W.P.B. FLORIDA
PARCEL 60-A AT THE MEADOWS